



WestWood®  
Qualität + Erfahrung

## Product summary

## PMMA waterproofing systems

### Product summary

The development and application experience of several decades is incorporated in every product based on high-quality PMMA (polymethyl methacrylate) resins. Short cure times and the extended durability of our end products allow us to offer the best possible solutions - both in terms of technology and economic efficiency.

Primer layer				
Product	Brief description	Application	Cons.	Notes
Wecryl 121	Ultra-low-viscosity primer for mineral substrates	Substrate stabilisation and water repellency for sand-releasing, cracked and porous substrates. Concrete protection to OS3. Fills cracks up to 3 mm wide.	0,3 - 1,2 kg/m <sup>2</sup> per coat	Consumption is dependent on nature of the substrate and utilisation requirements. Depending on the substrate, several applications may be required. Good dust stabilisation.
Wecryl 122	Low-viscosity primer for mineral substrates	Primer for problem substrates. Can be used on highly compacted, sand-releasing or porous surfaces.	0,4 - 0,5 kg/m <sup>2</sup> per coat	Consumption varies with nature of substrate. Depending on the substrate, a second application may be required. Good dust stabilisation. Ideal for scratch coats.
Wecryl 123	Primer for bituminous composite waterproofing	Primer for waterproofing systems in conjunction with polymer-bitumen sheets and liquid resins. Particularly suitable for bridges, roofs and underground areas.	0,5 - 1,2 kg/m <sup>2</sup> per coat	Consumption varies greatly with roughness of substrate. Good dust stabilisation. Ideal for scratch coats. Tested according to TL/TP-BEL-EP
Wecryl 124	Low-viscosity primer for damp substrates	On damp mineral substrates. Capillary barrier against rising damp and for increased residual moisture.	0,5 - 1,2 kg/m <sup>2</sup> per coat	Consumption varies with nature of substrate. Depending on the substrate, several applications may be required.
Wecryl R 222	Flexible primer for bituminous substrates	Primer on bituminous substrates: Asphalt concrete (AC), mastic asphalt (MA) and polymer-bitumen sheets.	0,4 - 0,8 kg/m <sup>2</sup>	Primer does not need to be applied to SBS bitumen sheets. Can also be applied to wood.
Wecryl 276 / 276K	Primer for mineral substrates	On absorbent substrates; concrete, mortar, screed, etc.	0,4 - 0,8 kg/m <sup>2</sup>	Consumption varies with nature of substrate. Depending on conditions on site, a second application may be required. Ideal for scratch coats.
Wecryl 298	Combination primer for absorbent and non-absorbent substrates	Combination primer for detailing. Can also be used for main areas of cement-bound substrates.	0,4 - 0,8 kg/m <sup>2</sup>	Ideal primer for a range of substrates. Primarily designed for Details.
Wethan 141	Rapid-curing 1C PUR primer for mineral substrates	Primer for absorbent substrates designed to be overcoated with Wethan polyurethane-based waterproofing products.	0,2 - 0,3 kg/m <sup>2</sup>	Consumption varies with nature of substrate. Depending on conditions on site, a second application may be required.
Wmp 713 Metal Primer	Metal Primer	For use on metallic substrates with standing water and termination details below 50mm.	0,1 - 0,2 kg/m <sup>2</sup>	Not PMMA
Wethan 509 FPO Primer	Primer for TPO / FPO		ca. 50 gr/m <sup>2</sup>	Not PMMA. Important! Always test on site as membranes vary greatly.

## PMMA waterproofing systems

### Product summary

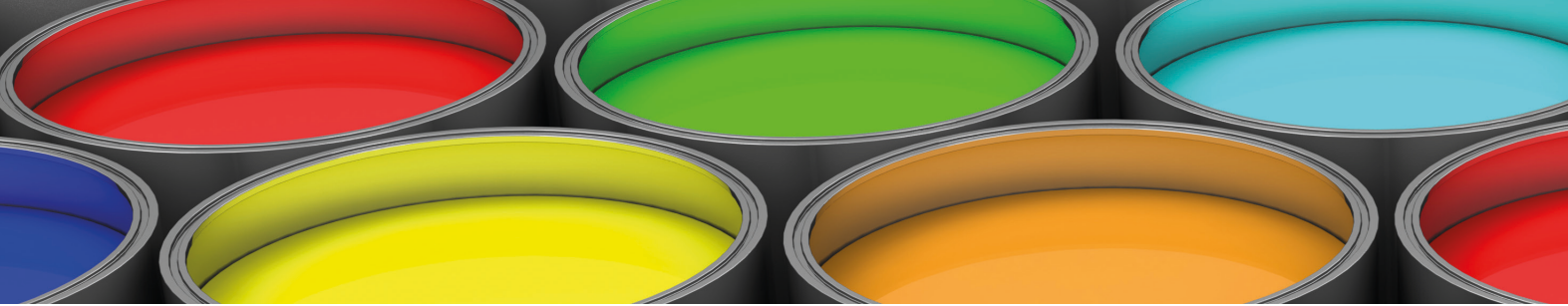
Waterproofing layer				
Product	Brief description	Application	Cons.	Notes
Wecryl R 230	Fleece-reinforced waterproofing for main areas	Classic EOTA roof waterproofing, requires fleece-reinforcement.	2,8 - 3,0 kg/m <sup>2</sup>	Additional covering layer if required, 1 – 1.5 kg/m <sup>2</sup> . Tested to ETAG 005 (W3).
Wecryl R 230 Thix	Fleece-reinforced waterproofing for upstands on details	R 230 Detailing resin, supplied as thixotropic product and optimised for vertical upstands on details.	2,5 - 2,8 kg/m <sup>2</sup>	Can also be sealed directly with 288 or given a colour coating. Tested to ETAG 005 (W3).
Wethan 275	UV-stable 1C polyurethane resin	PU Waterproofing for flat and detail area, can be installed with or without fleece depending on specification requirements.	1,4 - 2,5 kg/m <sup>2</sup>	Can be applied to most substrates without primer if the substrate is suitably pre-treated. Tested to ETAG 005 (W3).
Wethan 280 Flashing	Thixotropic, fibre-reinforced, UV-stable 1C polyurethane resin	PU Waterproofing inclusive of fibre reinforcement for details, can also be used in conjunction with Wethan 275 and other waterproofing systems.	1,5 - 3,5 kg/m <sup>2</sup>	Can be applied to most substrates without primer if the substrate is suitably pre-treated. Tested to ETAG 005 (W3).
Wecryl R 235	Fleece-reinforced waterproofing	For waterproofing in wet areas, under surfacing supplied by others or as topping without RS 233.	2,5 - 2,8 kg/m <sup>2</sup>	Depending on application, + covering layer or primer coating 0.6 – 1.2 kg/m <sup>2</sup> . Tested to ETAG 022.
Weproof RR 354	Fleece-free waterproofing	Waterproofing resin, first coat. Fleece-reinforced for upstands on details and for joints.	1,6 kg/m <sup>2</sup>	Basic colour red, with fleece reinforcement for joints or upstands and details approx. 2.4 kg/m <sup>2</sup> . A thixotropic version is also available.
Weproof RR 359	Fleece-free waterproofing	Waterproofing resin, second coat (or, depending on requirements, also as first coat)	1,6 kg/m <sup>2</sup>	Basic colour green. A thixotropic version is also available.
Protective layer				
Product	Brief description	Application	Cons.	Notes
Wecryl RS 233	Self-levelling mortar	As protective layer for systems suitable for foot and vehicle traffic. Can be used as a protective layer on top of the waterproofing layer or as a thick-film coating.	4,0 kg/m <sup>2</sup>	Versatile application. Can be adapted to suit the area of application and utilisation requirements.
Weproof RS 527	Self-levelling mortar	As protective layer for systems suitable for foot and vehicle traffic. Can be used as a protective layer on top of the waterproofing layer or as a thick-film coating.	4,0 kg/m <sup>2</sup>	Versatile application. Can be adapted to suit the area of application and utilisation requirements.



## PMMA waterproofing systems

### Product summary

Wearing layer				
Product	Brief description	Application	Cons.	Notes
Wecryl 220 Finish	UV-stable, transparent sealer (finish)	Transparent resin for sealing coloured quartz and pigmented natural sand surfaces.	0,4 - 0,8 kg/m <sup>2</sup>	Important! Always add the same proportion of catalyst to avoid colour differences. Make sure that an even layer is applied.
Wecryl 288 Finish	UV-stable, pigmented sealer (finish)	Sealer for topped and smooth surfaces, with and without chips. Can be used as a receiver for quartz sand toppings.	0,6 - 0,8 kg/m <sup>2</sup>	Abrasion-resistant sealer for topped mastic asphalt surfaces. Choice of colours based on RAL chart and NCS.
Wecryl Textured Surfacing	Abrasion-resistant and anti-skid wearing layer suitable for vehicle traffic	For extremely heavy-duty areas subjected to high-volume traffic, e.g. entrance and exit ramps on multi-storey car parks.	3,5 kg/m <sup>2</sup>	Abrasion-resistant, slip-resistant >SRT 65, good grip and good non-slip properties. Choice of colours based on limited RAL chart.
Wecryl 420 Rolled Surfacing	Flexibilised, abrasion-resistant, non-skid wearing layer on bituminous substrates; suitable for vehicle traffic	Versatile coating for the colour-enhancement of bitumen-bound road surfaces (FGSO road marking colours). Good coverage and partially crack-stabilising. Can be applied to asphalt without the need for primer.	0,6 - 2,5 kg/m <sup>2</sup> per coat	Can also be used as a receiver for various toppings. Abrasion-resistant, good grip and secure for foot and vehicle traffic. Choice of colours based on limited RAL chart.
Supplementary products				
Product	Brief description	Application	Cons.	Notes
Wecryl 242	Mortar	surfacing replacement and repair mortar for mineral and bituminous substrates.	approx. 2 kg/m <sup>2</sup> / mm	Standard black and grey. Particle size 3 mm.
Wecryl Surfacer	Fine surfacer (filler)	Pore and cavity filler, joint filler, adhesive for vitrified clay etc.	approx. 1.8 kg/ m <sup>2</sup> /mm	Do not coat directly with Wecryl 288.
Weseal	Spachtel faservergütet	Fibre-enhanced filler	approx. 1.8 kg/ m <sup>2</sup> /mm	
System accessories				
Product	Brief description	Application	Cons.	Notes
WestWood Fleece	Special polyester fleece	Polyester fleece 110 g/m <sup>2</sup> Widths: 0.10, 0.15, 0.20, 0.26, 0.35, 0.50, 0.70 and 1.05 m		50 lm rolls
WestWood Catalyst	Universal catalyst	For all PMMA products.		Quantities vary with product and season.

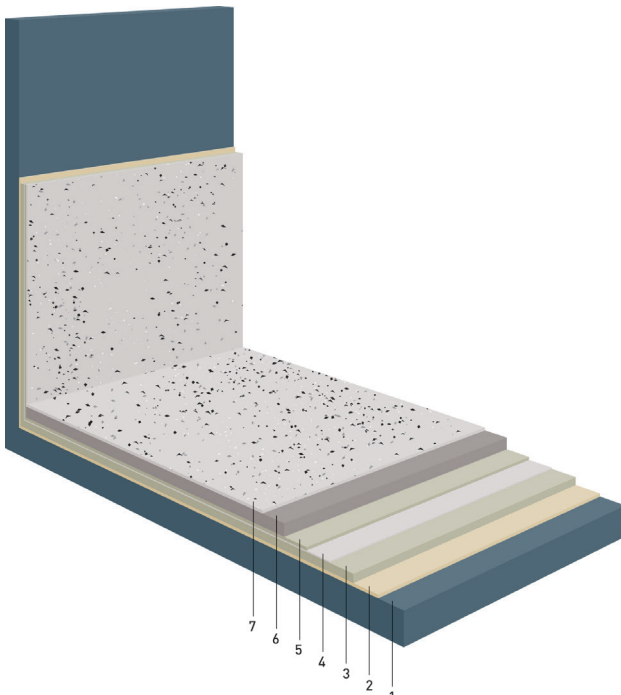


WestWood systems

## Solution-oriented · Versatile · Harmonised

PMMA systems can incorporate different product combinations to suit particular requirements. Thanks to their various properties, all the layers combine to create a 100 % cross-linked bond, which means that there is no risk of delamination. This fact allows us to determine the best possible and most economically efficient system in each case.

### Wecryl Waterproofing System



#### Substrate

1 e.g. concrete, mechanically pre-treated

#### Primer layer

2 e.g. Wecryl 276 Primer

#### Waterproofing layer

3 Wecryl R 230 / -thix

4 WestWood Fleece

5 Wecryl R 230 / - thix

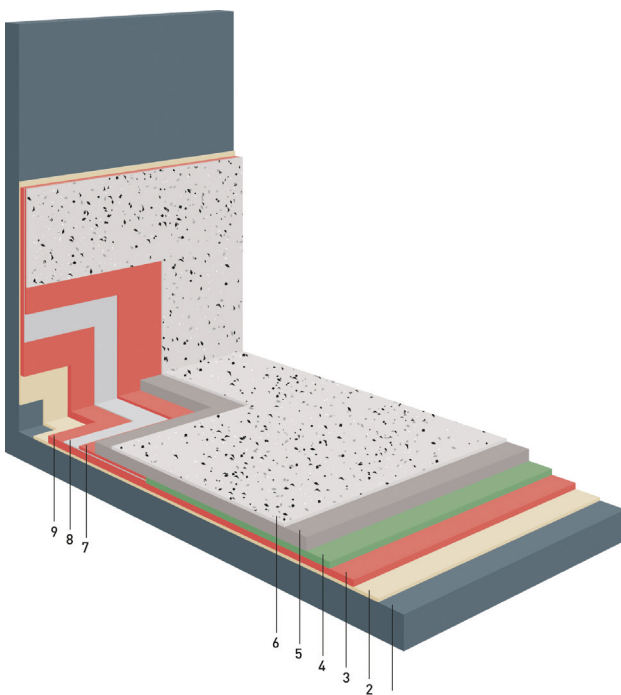
#### Protective layer

6 Wecryl RS 233 Self-Levelling Mortar  
(on floor area only)

#### Wearing layer

7 Wecryl 288 Finish with topping

### Weproof Waterproofing System



#### Substrate

1 e.g. concrete, mechanically pre-treated

#### Primer layer

2 e.g. Wecryl 276 Primer

#### Waterproofing layer

3 Weproof RR 354

4 Weproof RR 359

#### Protective layer

5 Weproof RS 527 self-levelling mortar

#### Wearing layer

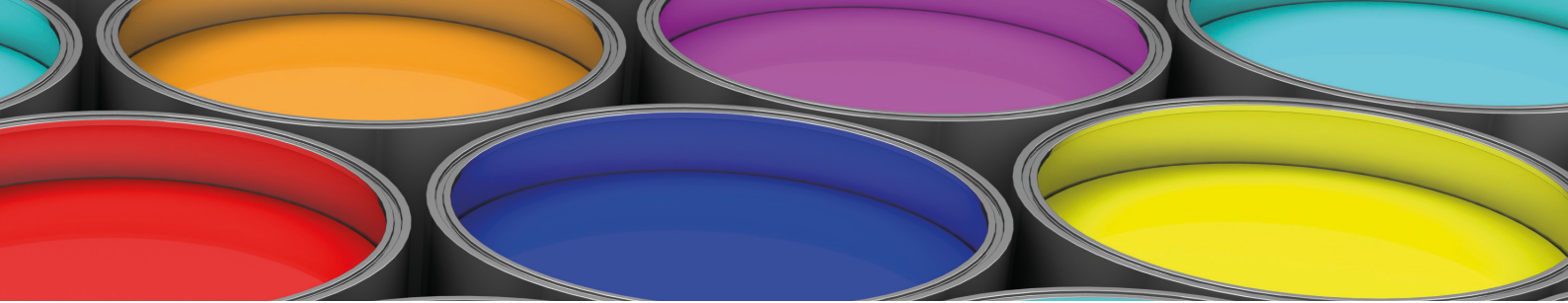
6 Wecryl 288 Finish with topping

#### Waterproofing details

7 Weproof RR 354 thix

8 WestWood Fleece

9 Weproof RR 354 thix



PMMA delivers:

## A variety of applications

Liquid PMMA-based resins have been used as waterproofing or surfacing systems for over 30 years. Depending on the technical, aesthetic and functional requirements, our systems are used in the follows areas of application:



### Balcony

Terraces  
Balconies  
Access galleries  
Stairways



### Roof

Flat roofs  
Dome roofs  
Projecting roofs  
Detailing



### Parking

Multi-storey  
Underground  
Ramps  
Entrances and exits



### Spa

Open-air pools  
Indoor pools  
Turkish baths  
Showers



### Traffic

Roads  
Airports  
Bridges  
Podiums



### Special

Underground  
Pond systems  
Fountains  
Kitchens



### Industry

Warehouses  
Frozen storage  
Workshops  
Laboratories



### Commercial

Food production  
Shopping centres  
Exhibition facilities  
Plant rooms



### Agriculture

Animal barns  
Feed lines  
Milking parlours  
Animal transporters

"We have relied on WestWood for years now because you cannot afford to experiment with waterproofing. They offer a specific as well as an economical, lasting and reliable solution, whether for roofs, balconies, wet areas or car parks." Urs Krähenbühl, Head of Liquid Resin, Bauimpuls AG, CH-Heimberg

WestWood Kunststofftechnik AG  
Baarerstrasse 57 · CH-6304 Zug  
Switzerland  
[www.westwood.ag](http://www.westwood.ag)  
Fon: +41 41 729 09 11

WestWood Liquid Technologies Limited  
16 Great Queen Street  
London WC2B 5AH · United Kingdom  
[www.westwood.eu](http://www.westwood.eu)  
Fon: +44 20 0333 1388

